

50 mV MODEL / 1500 THROUGH 2000 AMPERES / TYPE FJ 1500 a 2000 AMPERES / 50 mV MODELO

| CATALOG No. No. CATALOGO | AMP | A | | B | | C | | D | | E | | F | | G | |
|-----------------------------|------|--------|-------|-------|----|------|----|-------|-------|-------|------|------|----|------|-----|
| | | mm | in | mm | in | mm | in | mm | in | mm | in | mm | in | mm | in |
| FJ-1500-50 | 1500 | 244.48 | 9 5/8 | 76.2 | 3 | 25.4 | 1 | 92.08 | 3 5/8 | 11.11 | 7/16 | 50.8 | 2 | 12.7 | 1/2 |
| FJ-2000-50 | 2000 | 244.48 | 9 5/8 | 101.6 | 4 | 25.4 | 1 | 92.08 | 3 5/8 | 11.11 | 7/16 | 50.8 | 2 | 25.4 | 1 |

100 mV MODEL / 1500 THROUGH 2000 AMPERES / TYPE FJ 1500 a 2000 AMPERES / 100 mV MODELO

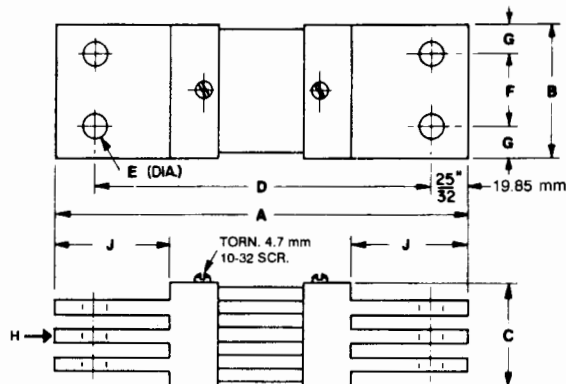
| | | | | | | | | | | | | | | | |
|-------------|------|--------|--------|-------|---|------|---|--------|-------|-------|------|------|---|------|-----|
| FJ-1500-100 | 1500 | 285.75 | 11 1/4 | 76.2 | 3 | 25.4 | 1 | 133.35 | 5 1/4 | 11.11 | 7/16 | 50.8 | 2 | 12.7 | 1/2 |
| FJ-2000-100 | 2000 | 285.75 | 11 1/4 | 101.6 | 4 | 25.4 | 1 | 133.35 | 5 1/4 | 11.11 | 7/16 | 50.8 | 2 | 25.4 | 1 |

50 mV MODEL / 1000 THROUGH 2000 AMPERES / TYPE FK 1000 a 2000 AMPERES / 50 mV MODELO

| CATALOG No. No. CATALOGO | AMP | A | | B | | C | | D | | E | | F | | G | | H | J | |
|-----------------------------|------|--------|--------|-------|-------|------|-------|-------|-------|-------|-------|------|-------|-------|------|---|-------|-------|
| | | mm | in | mm | in | mm | in | mm | in | mm | in | mm | in | mm | in | | | |
| FK-1000-50 | 1000 | 230.19 | 9 1/16 | 66.68 | 2 5/8 | 38.1 | 1 1/2 | 190.5 | 7 1/2 | 13.49 | 17/32 | 38.1 | 1 1/2 | 14.29 | 9/16 | 2 | 66.68 | 2 5/8 |
| FK-1200-50 | 1200 | 230.19 | 9 1/16 | 76.2 | 3 | 38.1 | 1 1/2 | 190.5 | 7 1/2 | 13.49 | 17/32 | 38.1 | 1 1/2 | 19.05 | 3/4 | 2 | 66.68 | 2 5/8 |
| FK-1500-50 | 1500 | 230.19 | 9 1/16 | 76.2 | 3 | 38.1 | 1 1/2 | 190.5 | 7 1/2 | 13.49 | 17/32 | 38.1 | 1 1/2 | 19.05 | 3/4 | 2 | 66.68 | 2 5/8 |
| FK-2000-50 | 2000 | 230.19 | 9 1/16 | 82.55 | 3 1/4 | 50.8 | 2 | 190.5 | 7 1/2 | 13.49 | 17/32 | 50.8 | 2 | 15.88 | 5/8 | 3 | 66.68 | 2 5/8 |

100 mV MODEL / 1000 THROUGH 2000 AMPERES / TYPE FK 1000 a 2000 AMPERES / 100 mV MODELO

| | | | | | | | | | | | | | | | | | | |
|-------------|------|-------|--------|-------|-------|------|-------|-------|---------|-------|-------|------|-------|-------|------|---|-------|-------|
| FK-1000-100 | 1000 | 276.2 | 10 7/8 | 66.68 | 2 5/8 | 38.1 | 1 1/2 | 252.4 | 9 15/16 | 13.49 | 17/32 | 38.1 | 1 1/2 | 14.29 | 9/16 | 2 | 66.68 | 2 5/8 |
| FK-1200-100 | 1200 | 276.2 | 10 7/8 | 76.2 | 3 | 38.1 | 1 1/2 | 252.4 | 9 15/16 | 13.49 | 17/32 | 38.1 | 1 1/2 | 19.05 | 3/4 | 2 | 66.68 | 2 5/8 |
| FK-1500-100 | 1500 | 276.2 | 10 7/8 | 76.2 | 3 | 38.1 | 1 1/2 | 252.4 | 9 15/16 | 13.49 | 17/32 | 38.1 | 1 1/2 | 19.05 | 3/4 | 2 | 66.68 | 2 5/8 |
| FK-2000-100 | 2000 | 276.2 | 10 7/8 | 82.55 | 3 1/4 | 50.8 | 2 | 252.4 | 9 15/16 | 13.49 | 17/32 | 50.8 | 2 | 15.88 | 5/8 | 3 | 66.68 | 2 5/8 |



H Number of copper blades at each end.
6.35 mm (1/4") thick, 6.35 mm (1/4") Apart.

H Número de disipadores de cobre en cada cuerpo.
6.35 mm (1/4)" de espesor, 6.35 mm (1/4)" de separación.

Dimensions in mm (inches). Tolerances ± 0.381 mm (0.015 in) for hole diameters, other tolerances ± 0.762 mm (0.030 in) unless otherwise noted. Dimensions are subject to change without notice.

Las dimensiones están en milímetros (pulgadas) con tolerancia ± 0.381 mm (0.015 in) para los diámetros de los barrenos, para las demás medidas 0.762 mm (0.030 in) a menos de que se especifique otra. Las dimensiones pueden variar sin previo aviso.